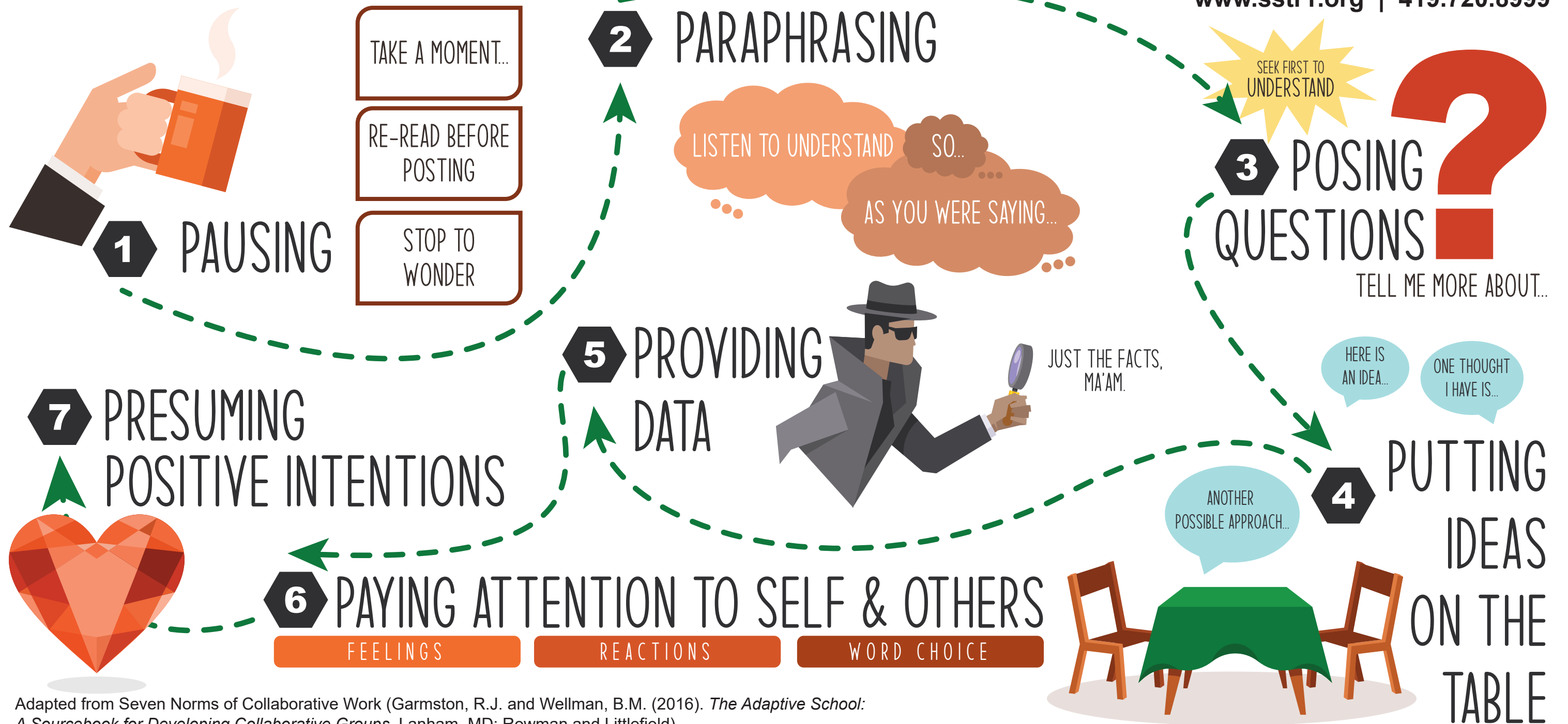


NORMS OF COLLABORATION

State Support
Team



www.sstr1.org | 419.720.8999



Adapted from Seven Norms of Collaborative Work (Garmston, R.J. and Wellman, B.M. (2016). *The Adaptive School: A Sourcebook for Developing Collaborative Groups*. Lanham, MD: Rowman and Littlefield)

There are no copyright restrictions on this document; however, please cite and credit the source when copying all or part of this document. This document was supported in whole or in part by the U.S. Department of Education, Office of Special Education Programs, (Award #H027A200111, CFDA 84.027A, awarded to the Ohio Department of Education). The opinions expressed herein do not necessarily reflect the policy or position of the U.S. Department of Education, Office of Special Education Programs, and no official endorsement by the Department should be inferred.

NORMS OF COLLABORATION

Adapted by State Support Team 1 from Seven Norms of Collaborative Work (Garmston, R.J. and Wellman, B.M. (2016). *The Adaptive School: A Sourcebook for Developing Collaborative Groups*. Lanham, MD: Rowman and Littlefield)

1

PAUSING

PAUSING BEFORE RESPONDING OR ASKING A QUESTION ALLOWS TIME FOR THINKING AND ENHANCES DIALOGUE, DISCUSSION, AND DECISION-MAKING.

2

PARAPHRASING

USING A PARAPHRASE STARTER AND FOLLOWING IT WITH AN EFFICIENT PARAPHRASE ASSISTS MEMBERS OF THE GROUP IN HEARING AND UNDERSTANDING ONE ANOTHER AS THEY CONVERSE AND MAKE DECISIONS. EXAMPLES: "SO..." | "AS YOU ARE..."

3

POSING QUESTIONS

POSE QUESTIONS TO EXPLORE PERCEPTIONS, ASSUMPTIONS, AND INTERPRETATIONS, AND TO INVITE OTHERS TO INQUIRE ABOUT THEIR THINKING. USE FOCUSING QUESTIONS SUCH AS, "WHICH STUDENTS, SPECIFICALLY?" TO INCREASE CLARITY. INQUIRE INTO OTHERS' IDEAS BEFORE ADVOCATING ONE'S OWN.

4

PUTTING IDEAS ON THE TABLE

IDEAS ARE THE HEART OF MEANINGFUL DIALOGUE AND DISCUSSION. LABEL THE INTENTION OF YOUR COMMENTS. EXAMPLES, "HERE IS ONE IDEA..." | "ONE THOUGHT I HAVE IS..." | "HERE IS A POSSIBLE APPROACH..." | "ANOTHER CONSIDERATION MIGHT BE..."

5

PROVIDING DATA

PROVIDING QUALITATIVE AND QUANTITATIVE DATA IN A VARIETY OF FORMS SUPPORTS GROUP MEMBERS IN CONSTRUCTING SHARED UNDERSTANDING FROM THEIR WORK. DATA HAVE NO MEANING BEYOND THAT WHICH WE MAKE OF THEM; SHARED MEANING DEVELOPS FROM COLLABORATIVE EXPLORING, ANALYZING, AND INTERPRETING DATA.

6

PAYING ATTENTION TO SELF AND OTHERS

MEANINGFUL DIALOGUE AND DISCUSSION ARE FACILITATED WHEN EACH GROUP MEMBER IS CONSCIOUS OF SELF AND OTHERS, AND IS AWARE OF WHAT THEY ARE SAYING, AND HOW OTHERS ARE RESPONDING. THIS INCLUDES BEING ATTENTIVE TO LEARNING STYLES WHEN PLANNING, FACILITATING, AND PARTICIPATING IN GROUP MEETINGS AND CONVERSATIONS.

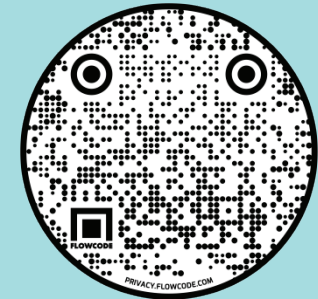
7

PRESUMING POSITIVE INTENTIONS

ASSUMING OTHERS' INTENTIONS ARE POSITIVE PROMOTES AND FACILITATES MEANINGFUL DIALOGUE AND DISCUSSION, AND PREVENTS UNINTENTIONAL PUT-DOWNS. USING POSITIVE INTENTIONS IN SPEECH IS ONE MANIFESTATION OF THIS NORM.

ACTIVITY:

USING YOUR SMART PHONE, SCAN THE QR CODE TO VIEW A SHORT BIG BANG THEORY VIDEO.



AFTER WATCHING THE CLIP, DISCUSS:

- WHICH COMMENTS EXEMPLIFIED ANY OF THE NORMS OF COLLABORATION?
- WHICH COMMENTS WERE BARRIERS TO COLLABORATION?